

Welcome to the East Area Planning Committee

- This planning committee meeting is held in public but it is not a public meeting.
- There will be an opportunity for the public to address the committee on each application.
- If you wish to speak for or against a planning application, you need to have either requested it in advance, or hand in one of the available speaker forms, or speak to the clerk.
- Information on meeting protocol and conduct at the committee is set out in the Code of Practice.
- This is in the committee agenda just before the first planning application report.





Entrance to Campus from Roosevelt Drive



Site of Bioescalator /Amenities Building

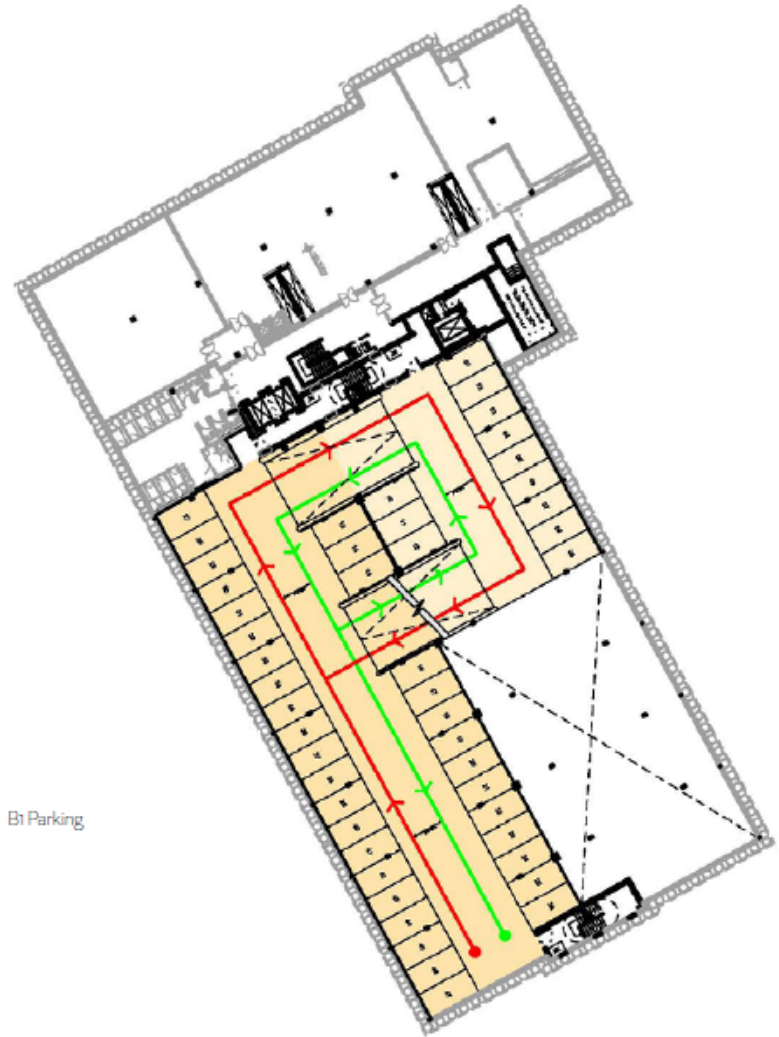
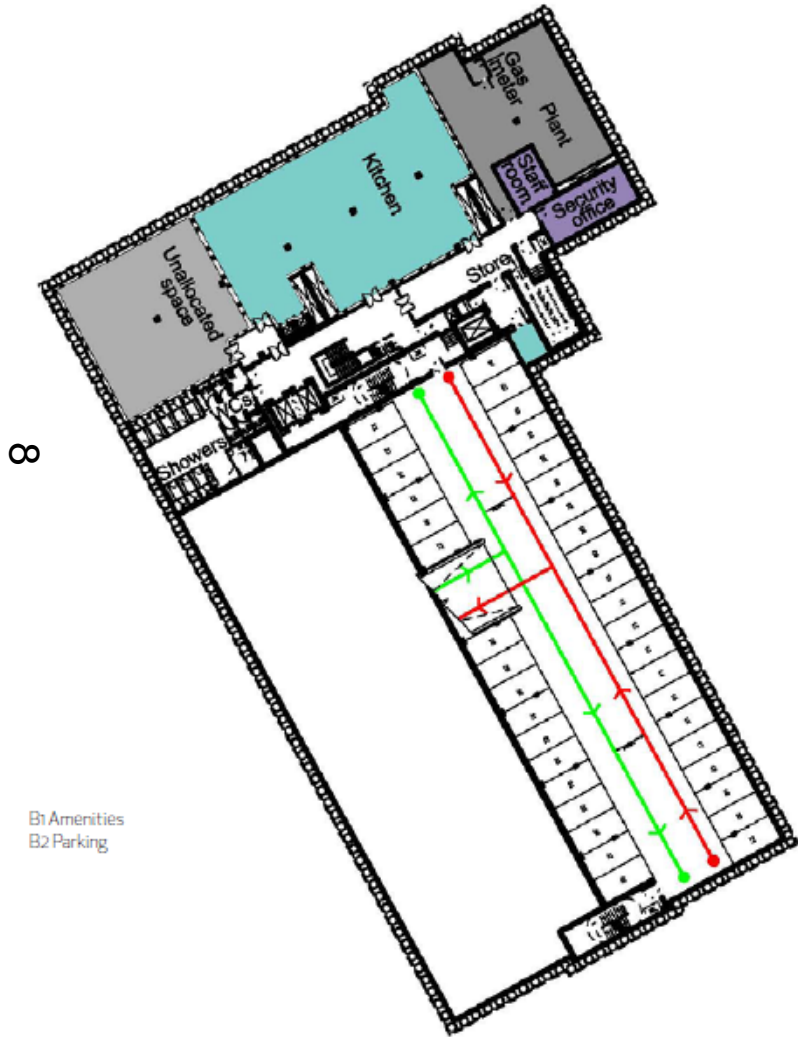


Site of BDI Building under Construction

Masterplan



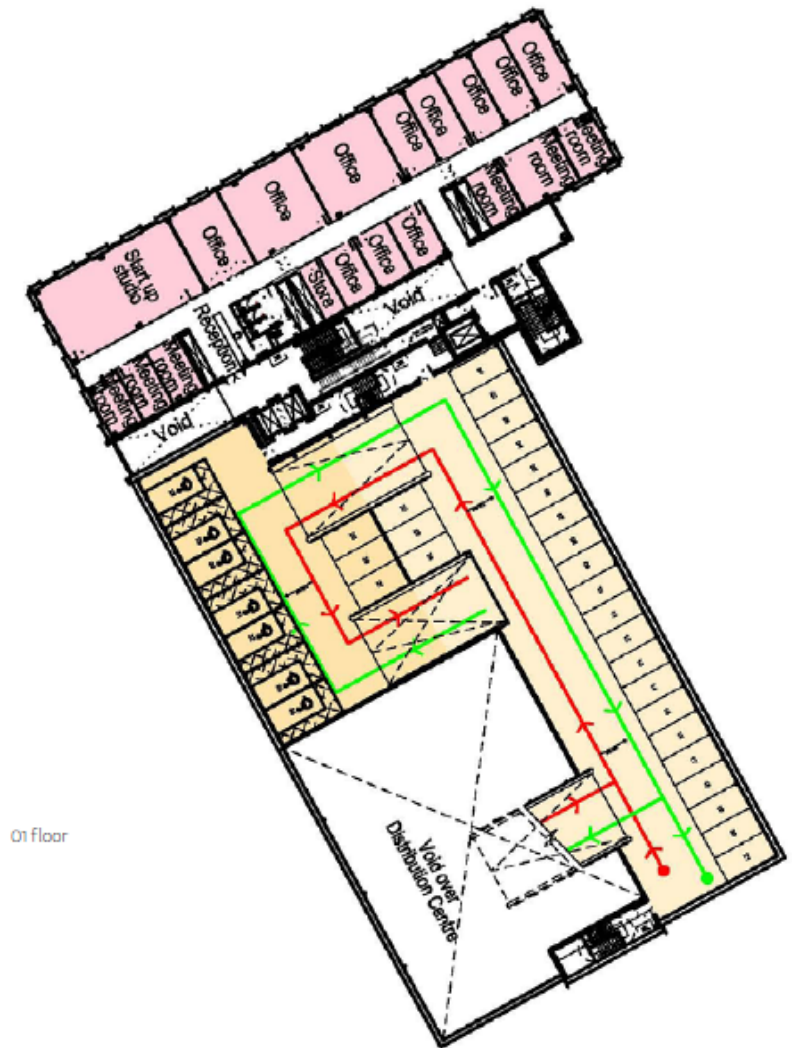
Indicative internal arrangements



Basement



Ground floor

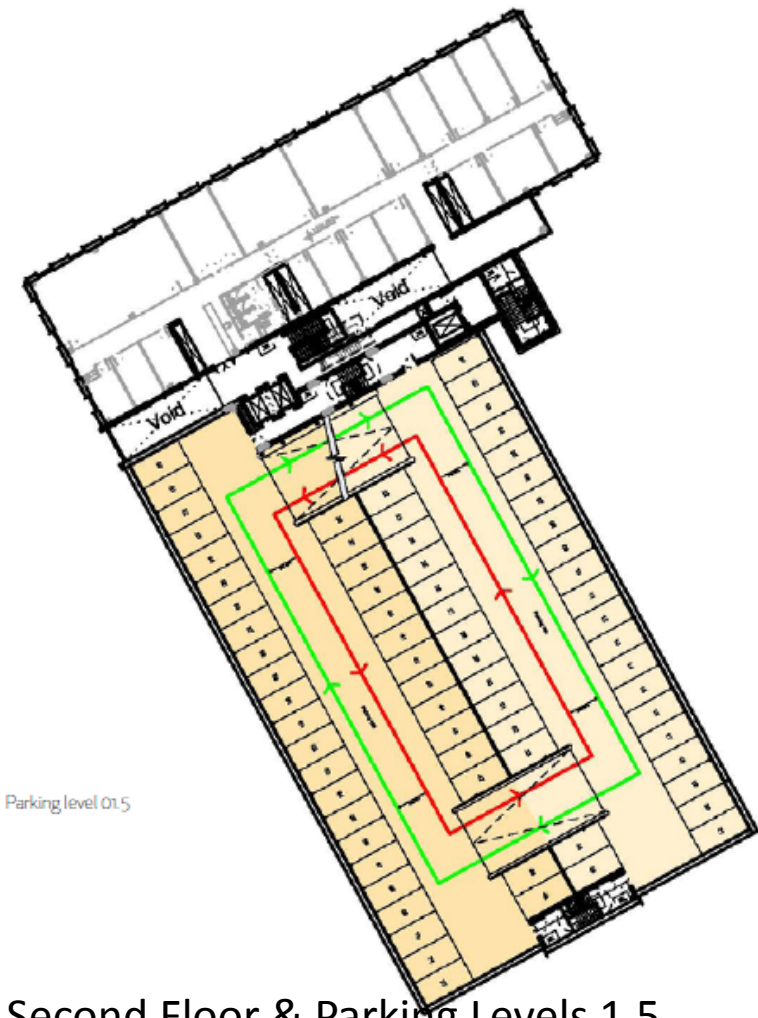


01 floor

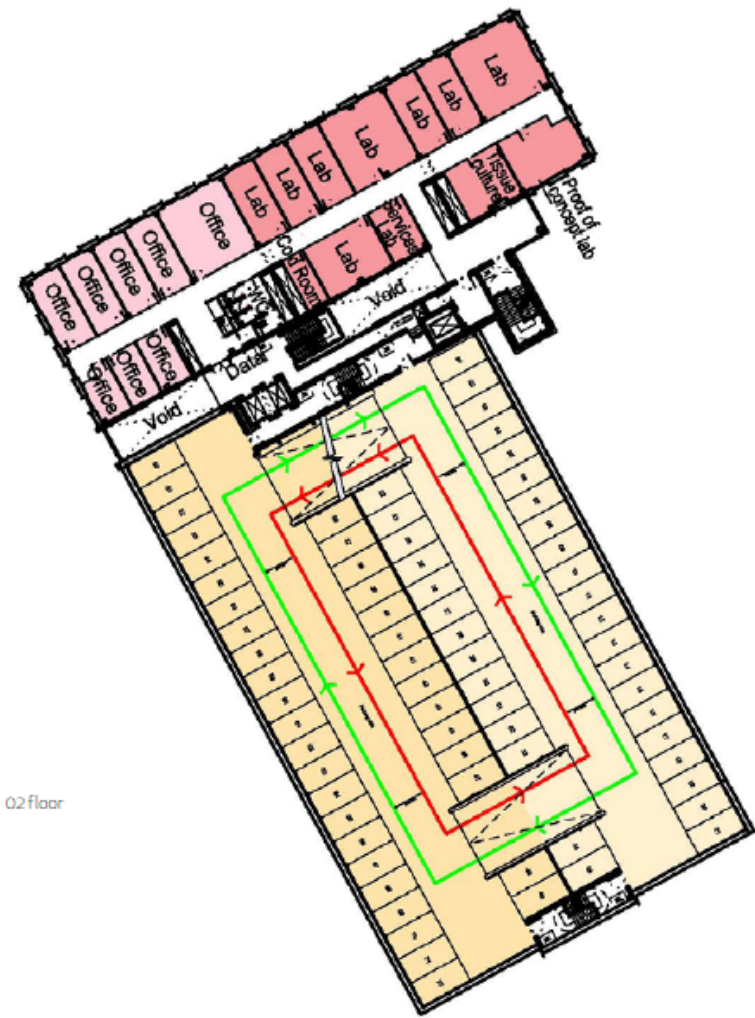
Ground and First Floor

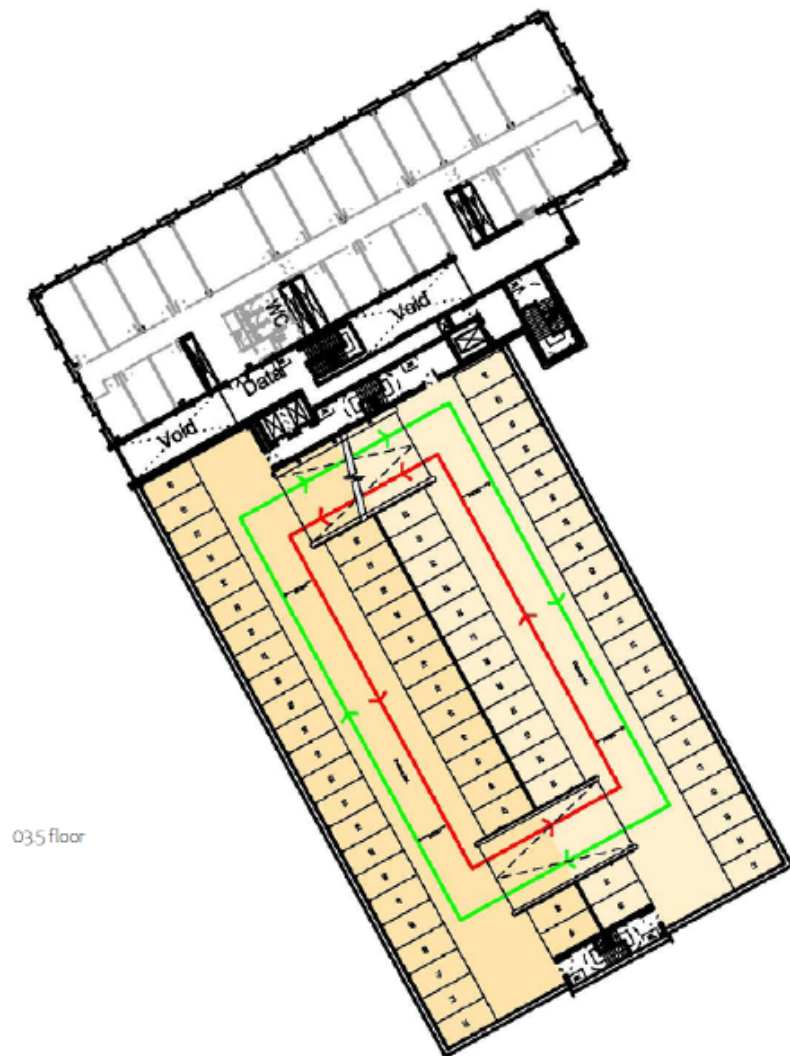
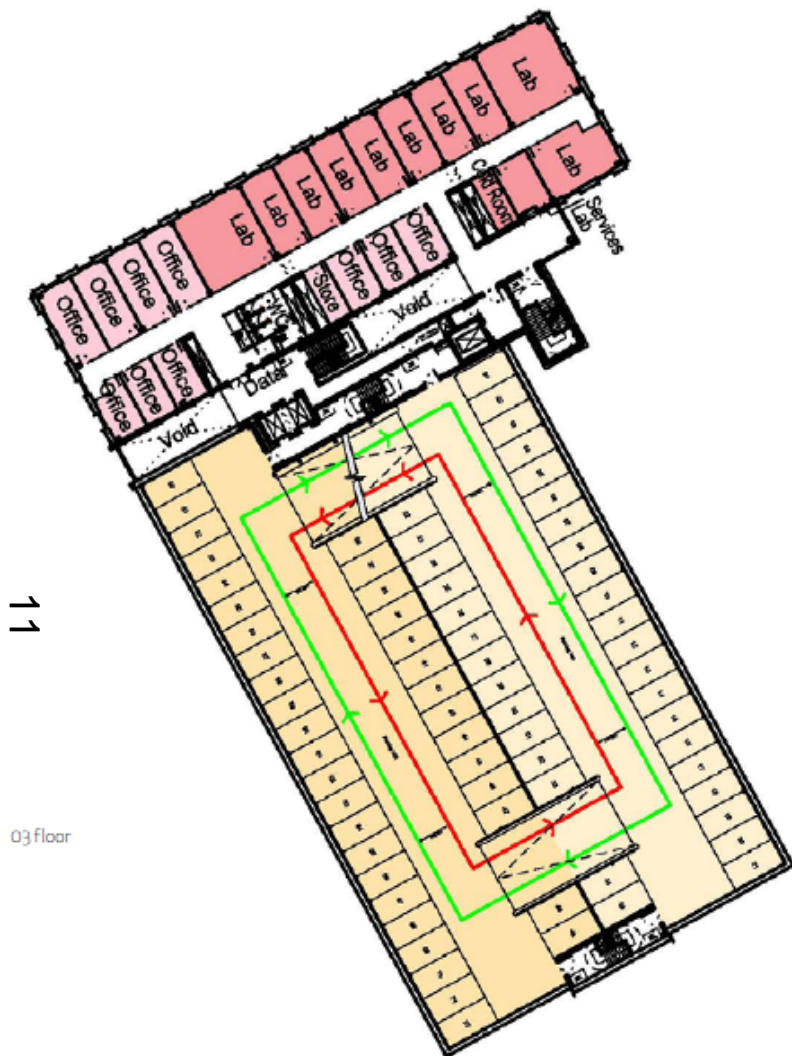
Indicative internal arrangements

10



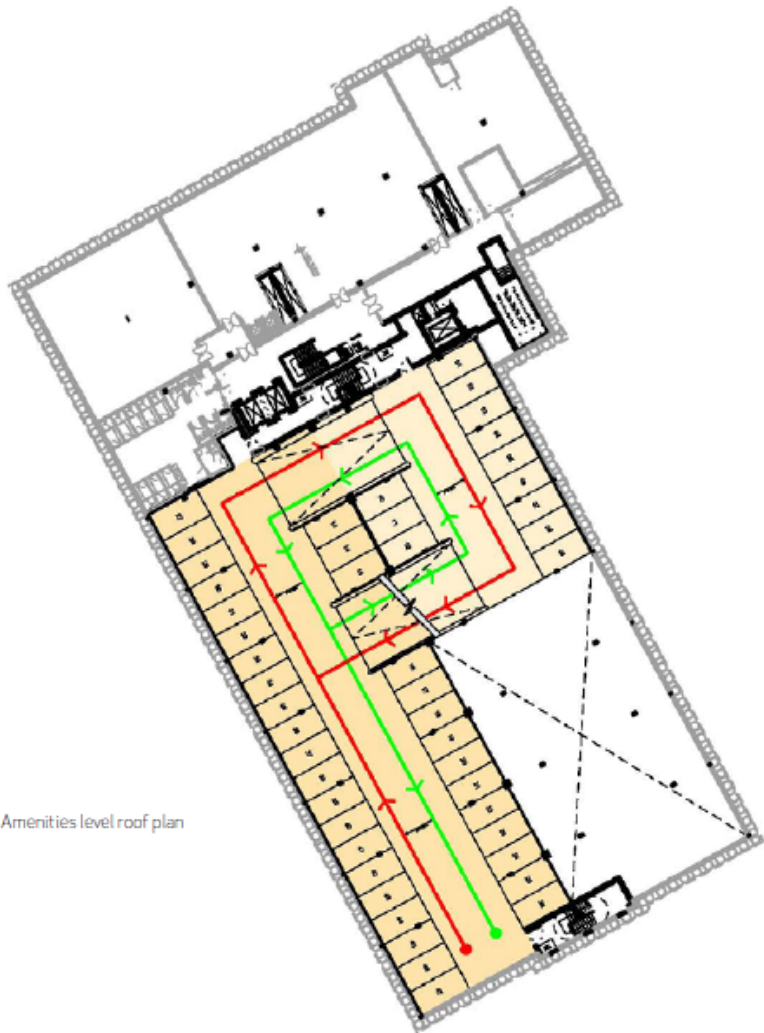
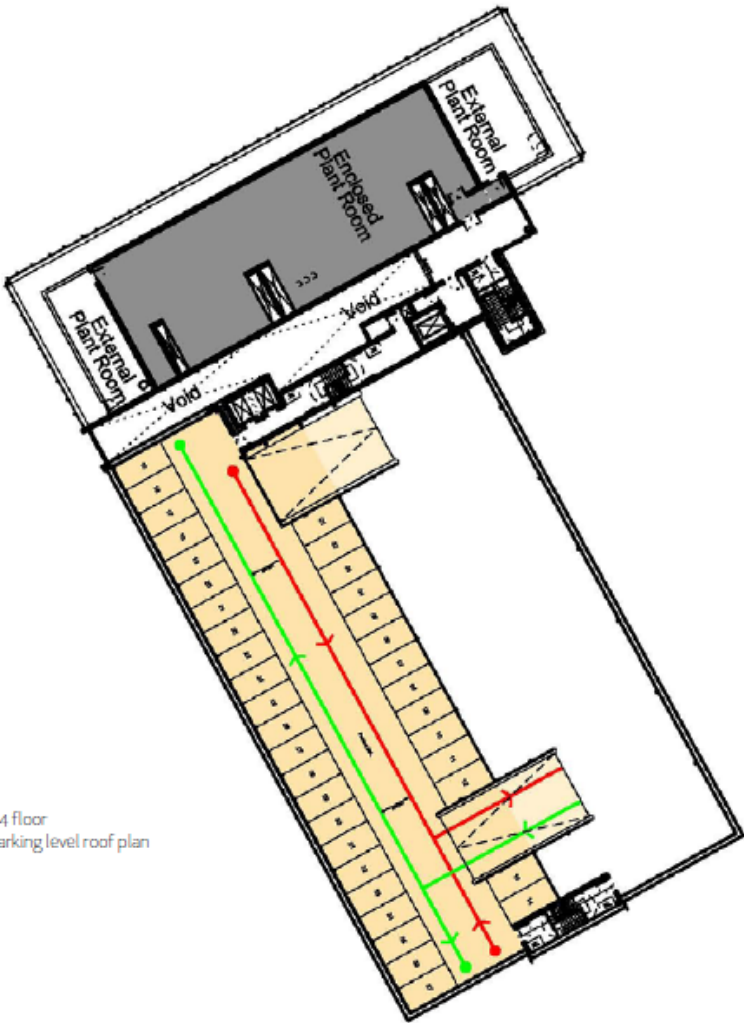
Second Floor & Parking Levels 1.5



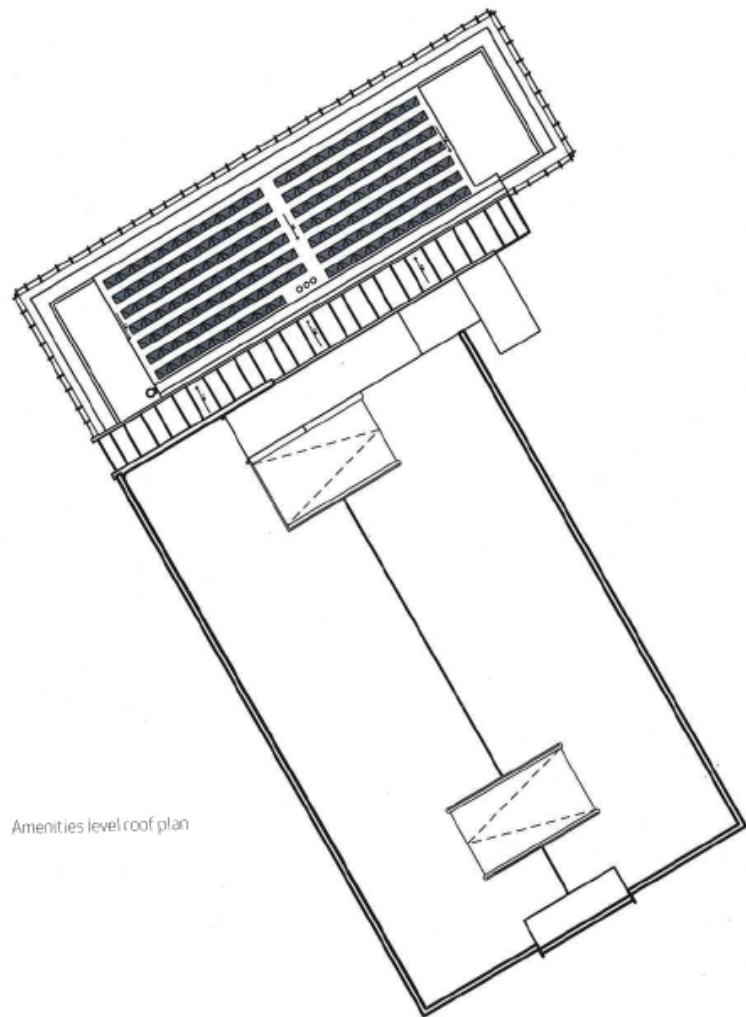
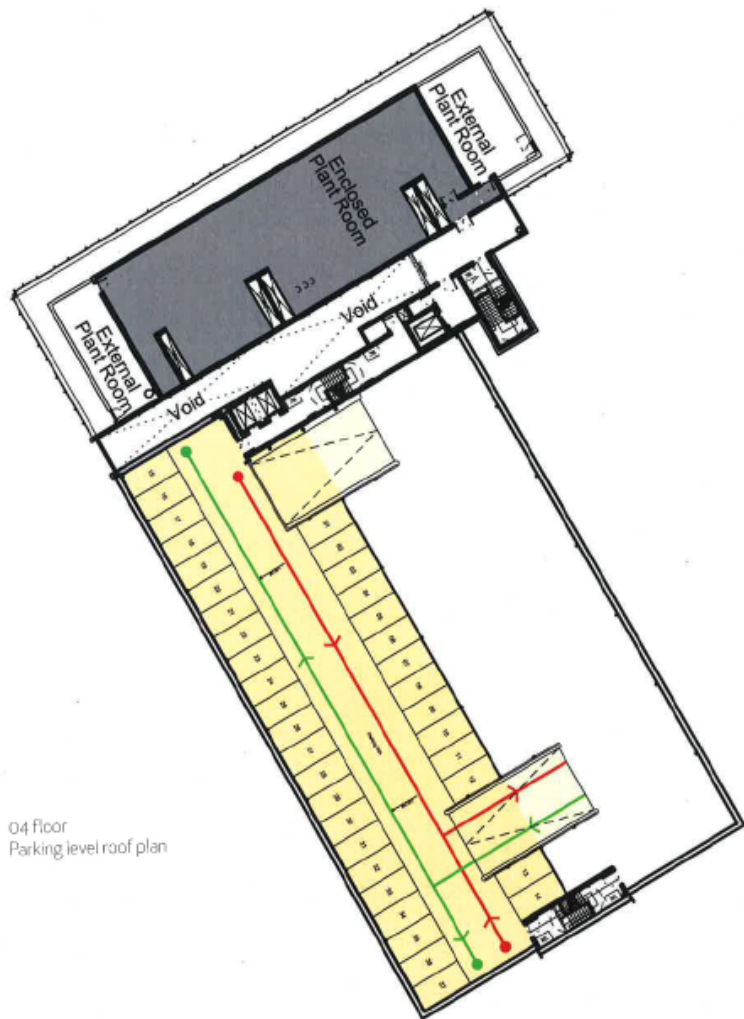


Third Floor & Parking Level 3.5

12

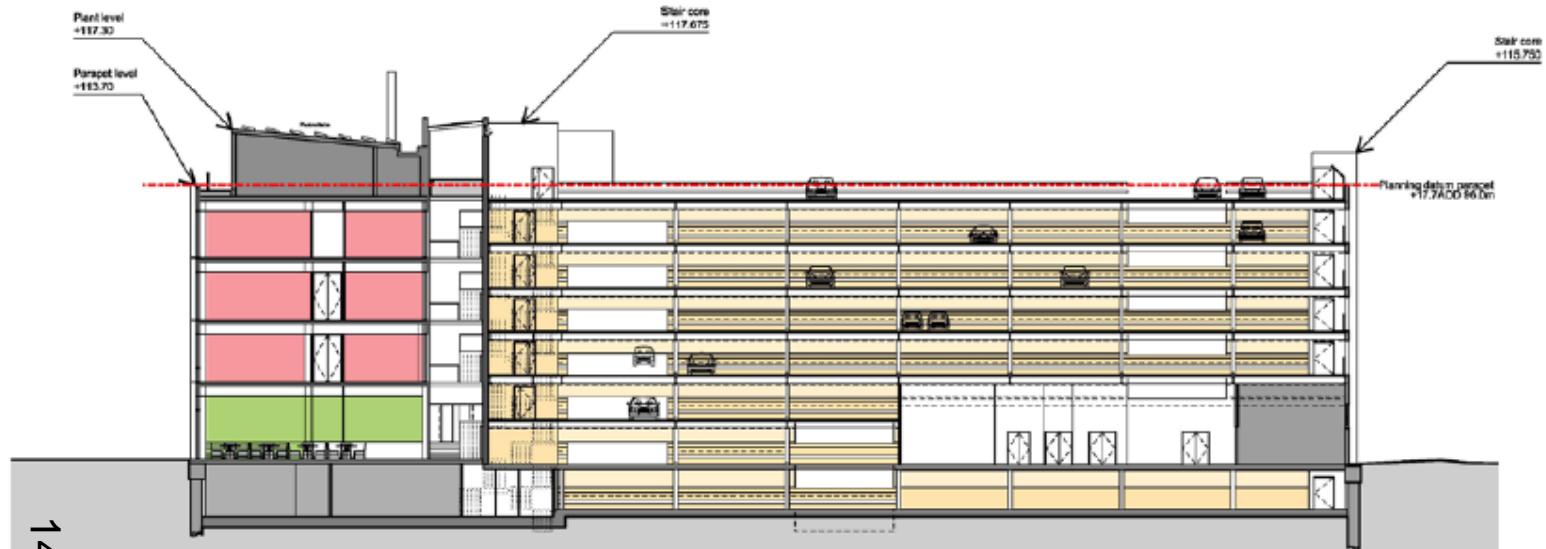


Roof Level

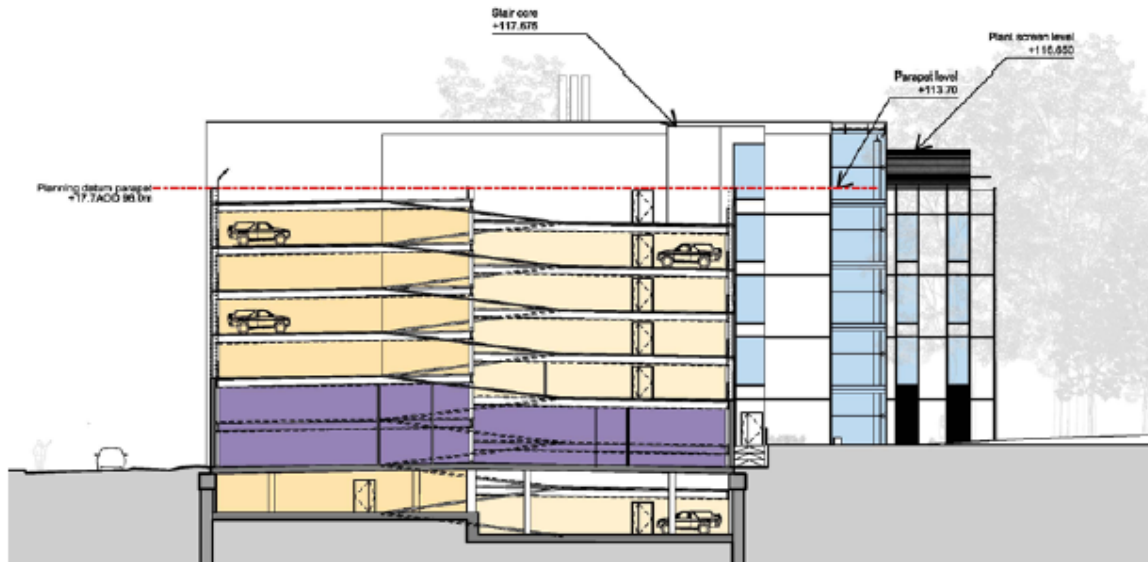
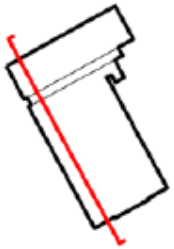


Roof Level with PVs

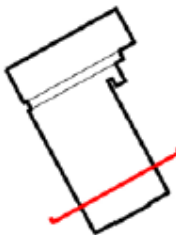
Sections



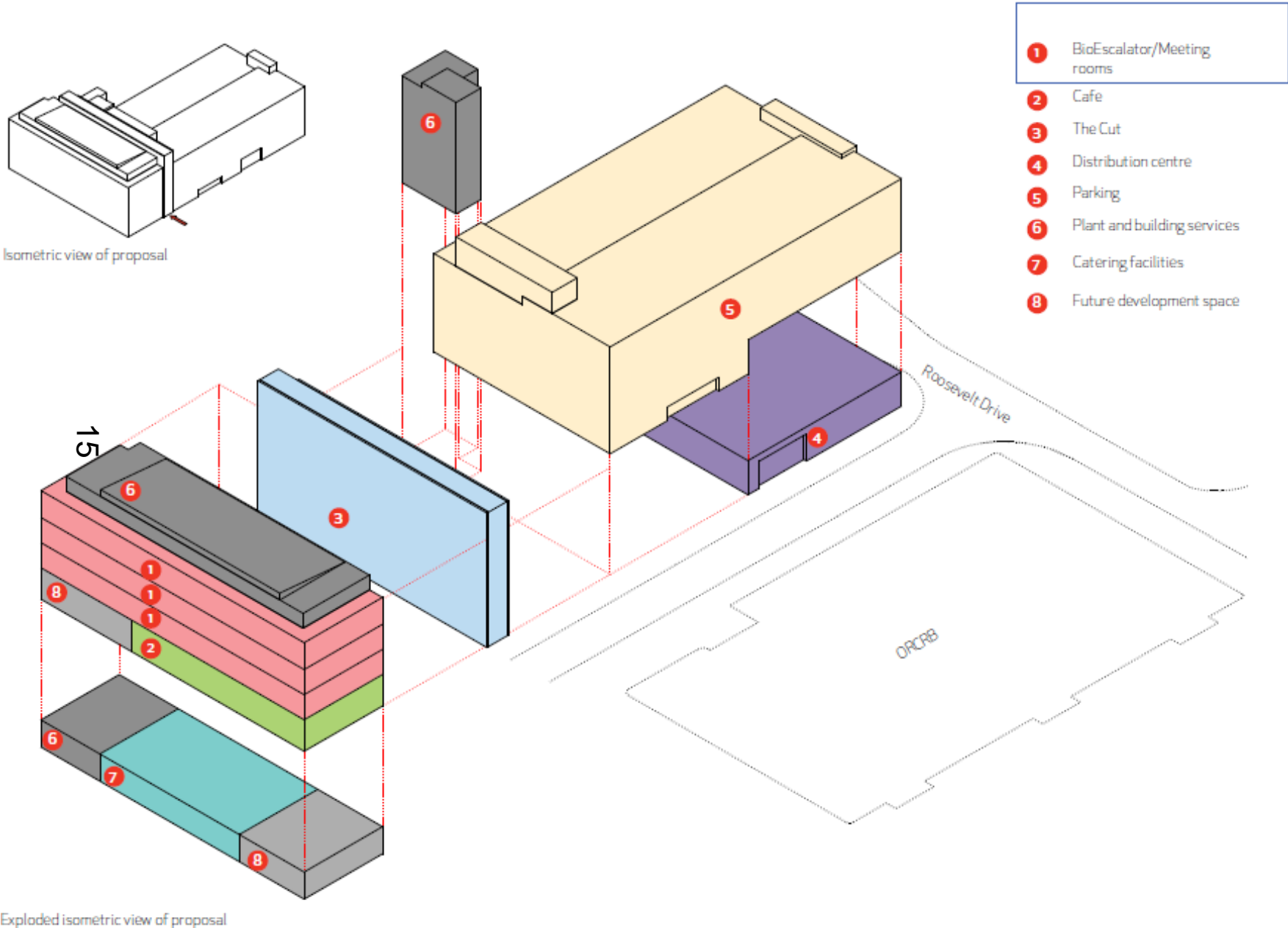
North-south section of Amenities Building



East-west section of Amenities Building



Exploded View



Typical Elevations with “the Cut”

A veil of vertical metal bands forms the basis of the Amenities Building facade design. This ensures the building reads as a sibling to the adjacent buildings, to which it functionally relates.

The gaps between these bands are either precast solid elements, or glazing, depending upon the need for daylight, ventilation or views out.

It is intended that the verticality of the facade will mediate between Old Road Campus Research Building and the Kennedy Institute, at the same time, reflecting the spirit of Oxford through mass and density of the materials used.

16



Artistic impression of the view from Roosevelt Drive



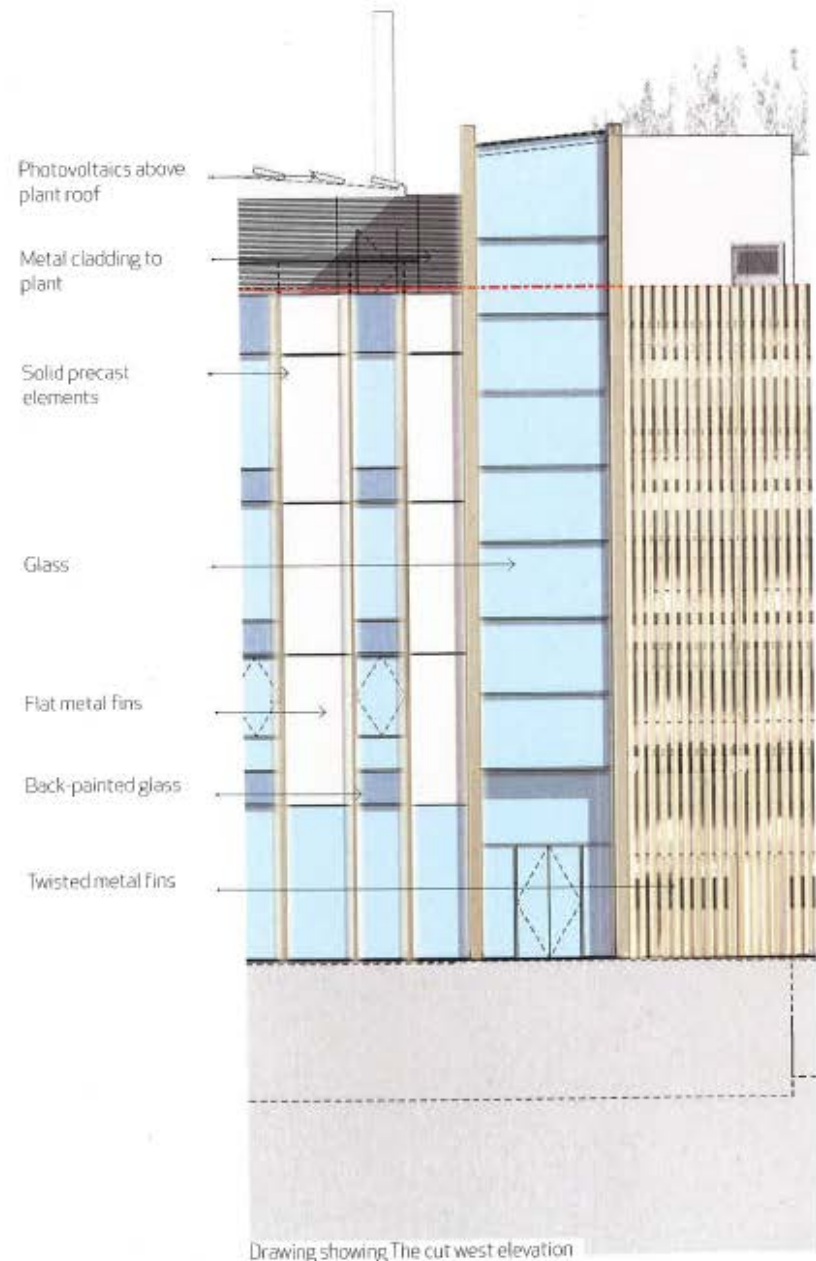
Artistic impression of the main entrance

West facade 'Cut'

The west facade reveals the first glimpse into the cut through the building that is an interconnecting parking structure with the Amenities Building.

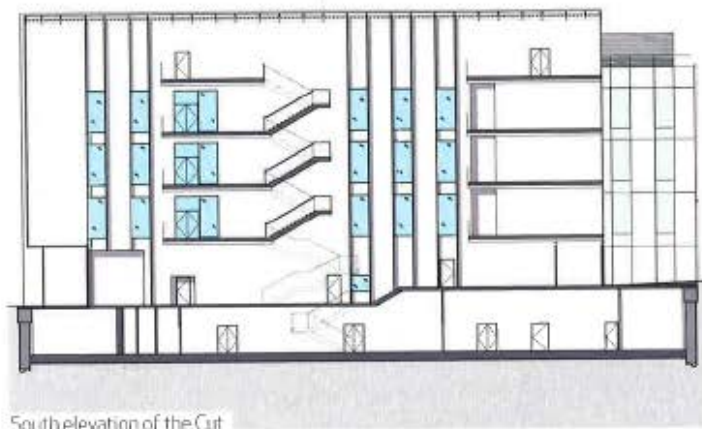
The cut features a series of lightweight bridges where people can be seen moving through the building.

This slot also articulates and reconciles the more open south facade with the north facade.



Drawing showing The cut west elevation

17



South elevation of the Cut

West Elevation



18

Artistic impression expressing the main entrance into the Amenities Building

Perspective View from North - West

The main cladding strategy plays with the contrast of translucency and opacity to split the two parts of the building and highlight the 'cut' route.

The carpark side of the building will play on translucency, allowing light into the structure and maintaining the visual link through to the protected tree line to the east.

In contrast, the Amenities and BioEscalator side of the building will have a more solid appearance, creating a distinct form and a refined, high-quality internal space.

19



East elevation



Artistic impression of the main entrance, accessed directly from the landscaped area in front of the west facade. A large single-storey opening provides weather protection and creates a strong identity for the building.

Elevational Detail

Artistic impression of the twisted blades that create the oak facade



Aerial View



21

Aerial view artistic impression

This page is intentionally left blank